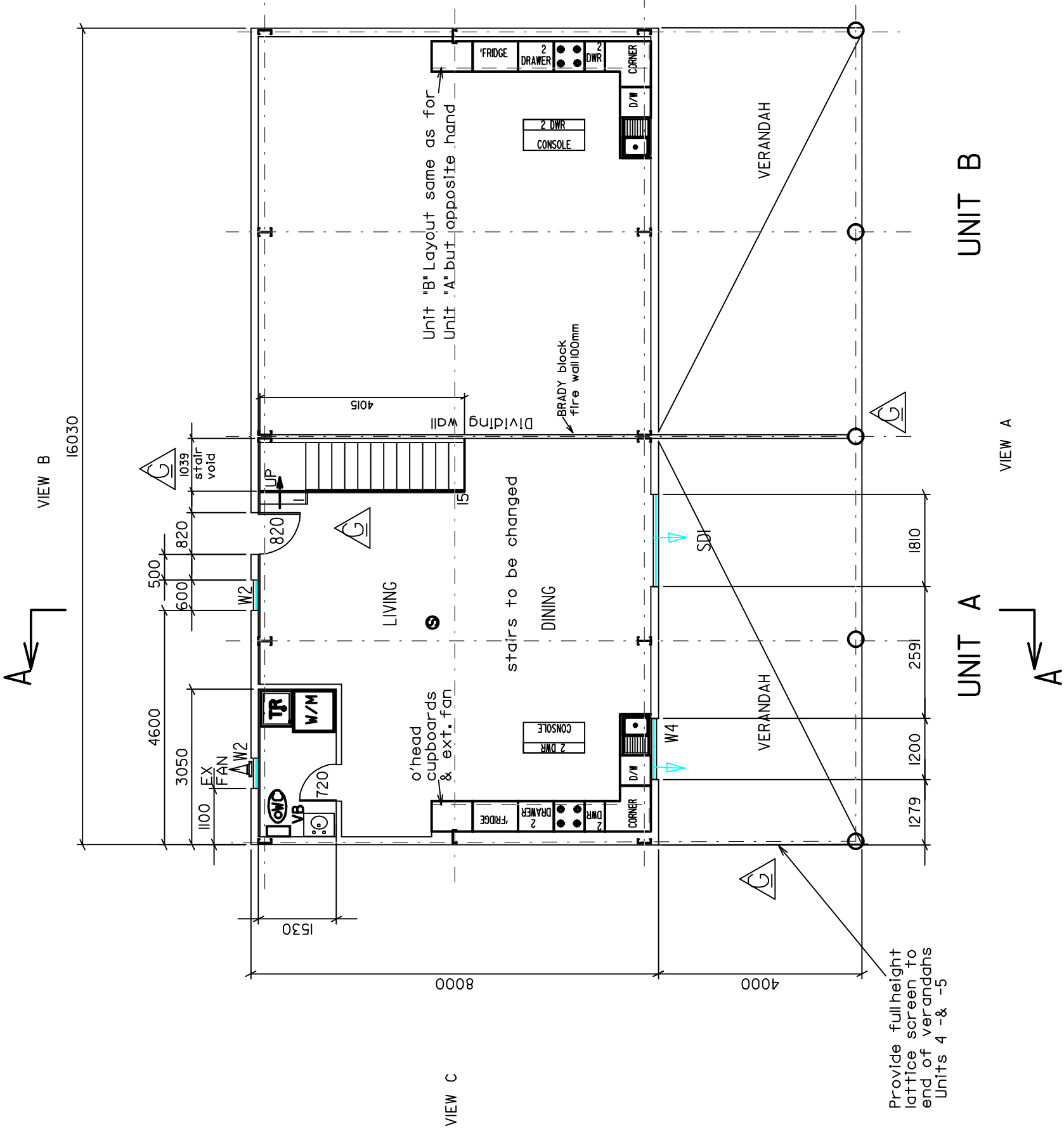


NOTES

1. Levels are based on ground floor level as R.L. = 0
2. All details to be read in conjunction with Structural Engineers drawings
3. Wall linings :- gyprock plasterboard on metal battens as per manufacturers details
4. Shower walls approved reinforced cement Hardiflex sheeting to manufacturers details
5. Wet area flooring 'Cemintal' compressed sheeting or equal approved
7. Ceilings throughout 'Colorbond mini-orb' or equal approved
8. Roof insulation :- double insulation + AirCellglareshield
9. External Wall insulation:- AirCellglareshield + batts
10. Set MDF Stairs to Detail: 16 Risers x 179.4mm going 242.4mm tread 254mm
11. Toilet exhaust fans to be switched ON with light fitting switch
12. VB - Vanity basin
13. Smoke detector
14. Refer drawing DUP5 for alternative details
15. Wall columns supporting dividing wall to be clad in 'GYPROCK FYRCHER'
16. Wall columns supporting dividing wall to be spaced at 100mm



VIEW D



Provide full height lattice screen to end of verandahs Units 4 - & -5

Door SDI- Glazed, sliding	1810W x 2100H
Window W4	1200W x 900H
Window W3	1490W x 1200H
Window W2	600W x 900H
Window W1	1490W x 900H
Description	Dimension

**PROPOSED DUPLEX UNIT
LEVEL 1 FLOOR PLAN**

LOTs 355, 356, & 357
JOHNSTON, ROWAN and ELDER STREETS
DERBY 6728

J.E. & B.M. MILLER
70, Everingham St. Carine 6020
Tel (08) 9447 7579
email: hlampstone@inet.net

SCALE: 1: 100	DRN J. E. M.	ENG
DATE 23/05/07	DRG	CHK
	CHK	APPD

SHEET DUPI

REV G